

# OLD TRAIL P.U.D. - PHASE 1

IN PART OF SECTIONS 23 AND 24, TOWNSHIP 40 SOUTH, RANGE 41 EAST  
MARTIN COUNTY, FLORIDA

GEE & JENSON  
ENGINEERS - ARCHITECTS - PLANNERS, INC.  
WEST PALM BEACH, FLORIDA  
JUNE 1986

I, Louise V. Isaacs, Clerk of the Circuit Court of Martin County, Florida, hereby certify that this plat was filed for record in Plat Book 10, Page 147, Martin County, Florida Public Records, this \_\_\_\_\_ day of \_\_\_\_\_, 1986 A.D.

LOUISE V. ISAACS, CLERK  
CIRCUIT COURT  
MARTIN COUNTY, FLORIDA

FILE NO. \_\_\_\_\_

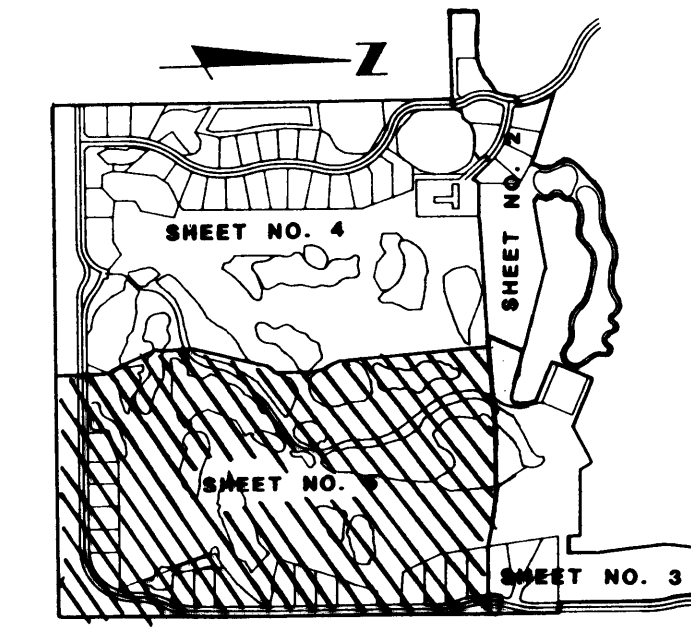
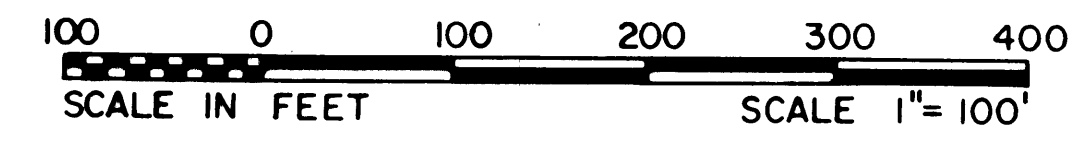
BY: \_\_\_\_\_  
Deputy Clerk

### CURVE DATA

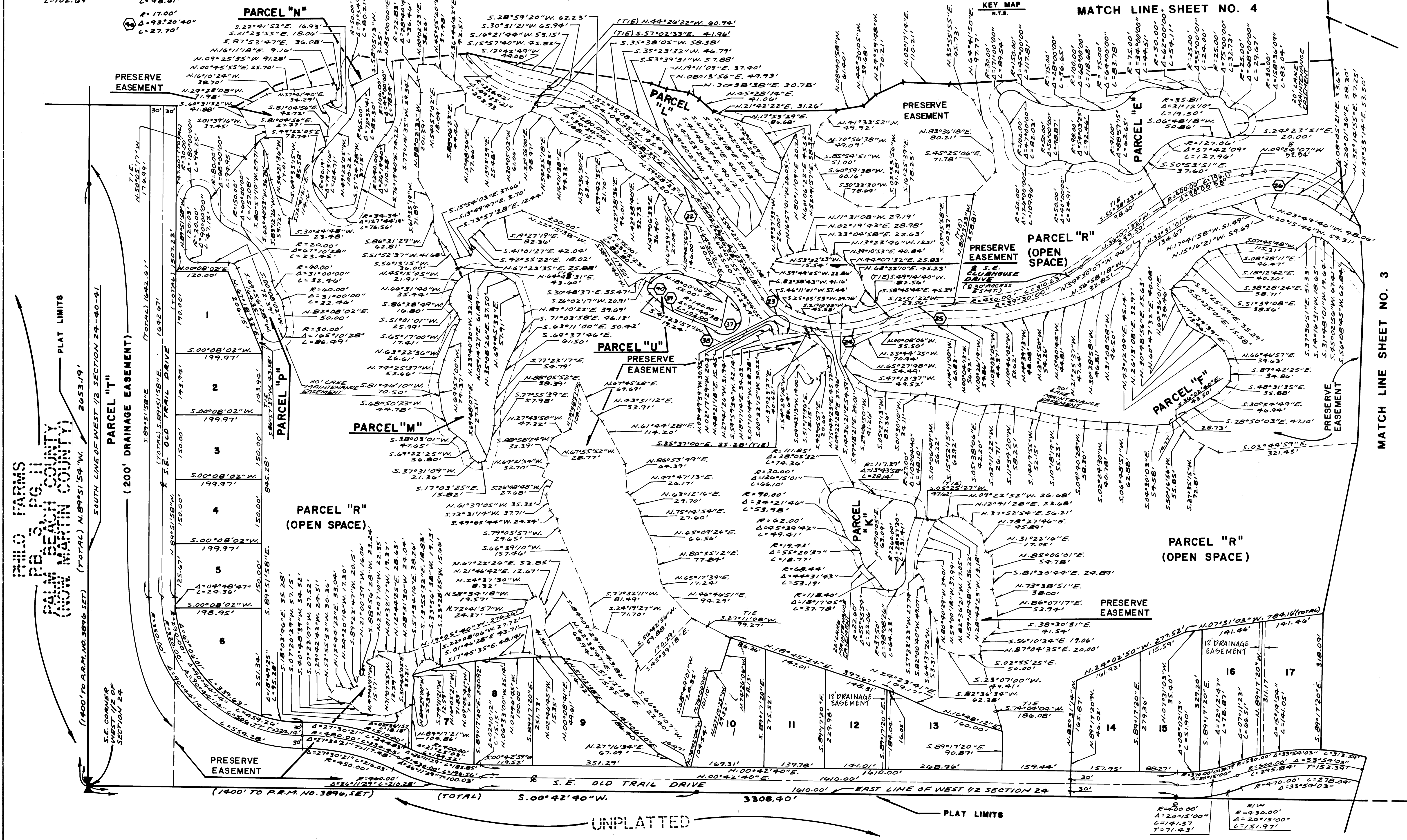
- 22 R=247.08' Δ=14°55'24" L=64.36'
- 23 R=143.60' Δ=48°30'48" L=121.59'
- 24 R=270.00' Δ=36°30'00" L=172.00'
- 25 R=38.00' Δ=154°50'08" L=98.61'
- 26 R=295.00' Δ=30°30'00" L=157.04'
- 27 R=250.00' Δ=44°00'00" L=141.99'
- 28 R=200.00' Δ=16°34'44" L=57.87'
- 29 R=241.45' Δ=23°23'57" L=98.61'
- 30 R=17.00' Δ=93°20'40" L=27.70'



MATCH LINE SHEET NO. 4



MATCH LINE SHEET NO. 4



PHILO FARMS  
P.B. 3 PG. 11  
PALM BEACH COUNTY  
(CROSS MARTIN COUNTY)

COMPUTED P.A.C.

DRAWN D.L.B.

CHECKED W

COMMENTS \_\_\_\_\_

APPROVED \_\_\_\_\_

REVISION \_\_\_\_\_